

OL4

# SECTIONAL GARAGE DOOR OPENERS



## Standard Features

Our openers have been engineered to the highest standard to ensure optimum performance, which is why each installation comes with the following standard features.



### Remote handset

These remotes are the most effective way to open and close your garage door. They are lightweight and can be programmed with up to 29 million transmitter code combinations.



### Courtesy light

This courtesy light is the most convenient way to navigate through your garage and to get in and out of your car. The light automatically switches on and off as you open and close your garage door.

## Quality and adaptability

Our garage door openers are manufactured from quality composite materials, and are approved to the latest world-wide standards. They can also be fitted to most popular brands of sectional garage doors with accessories to suit your requirements.

## Garage door stop programming

This convenient feature allows for the garage door to be stopped at any height for the purpose of ventilation or pet access.

## Auto reverse system

For added safety, each installation comes with this automated feature that causes the garage door to immediately stop and reverse when it comes into contact with an object.

## In-built safety timer

This automatic close timer will ensure that your garage door will close automatically (with optional photo eye beams installed) if you forget to close it yourself. This is a fantastic security feature that will ensure that you have peace of mind.

## Easy to install and service

Approved to world-wide standards and covered by a 5 year motor warranty. Experienced service technicians provide repairs and replacement parts for your new or existing garage door, motor or remote.

Call (07) 3713 3200 | [steel-lineautomation.com.au](http://steel-lineautomation.com.au)



# OL4

# SECTIONAL GARAGE DOOR OPENERS

Powerful and reliable, the OL4 Sectional Garage Door Opener is a smart choice for residential sectional doors. The high quality materials and latest technology will ensure years of trouble free operation.



- 1/2 HP AC motor type
- 18m<sup>2</sup> maximum garage door size
- 29 million transmitter code combinations
- 433MHz transmitter frequency
- "Auto Safety Reverse" function included
- Minimum headroom of 50mm
- Optional "Photo Eye" protection
- 5 year motor warranty, 2 year electronics warranty
- Courtesy light included
- Manual disengagement system
- Manual limit system
- Pole/Chain drive type
- 5 year motor warranty, 2 year electronics warranty

## Accessories



### Emergency key release

Used in case of malfunction or power failure, especially useful if there is no other access to the garage.



### Electronic key switch

Allows entry into your garage from outside, via a key lock. Useful when remote handset is not available.



### 'Photo Eye' technology

For added safety, this allows the garage door to automatically reverse when its sensory light beam is broken by an obstruction, helping to protect your family from injury and your car from the damage caused by contact.



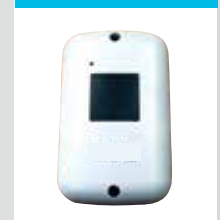
### Wireless keypad

Weatherproof digital keypad with cover which can be programmed with codes from 1 to 6 digits, for maximum security. Includes back-light for your convenience when used in poor lighting situations.



### Remote handset

Comes with three buttons which act as multi-functional hand transmitters. It can also be programmed to open different garage doors or gates on the one-handset.



### Wireless wall mounted remote

Can be installed near an internal access door to your garage giving you greater convenience to open and close your garage door.

For the ultimate in convenience and functionality, Steel-Line Automation offers a range of optional accessories to complement standard opener installations.

Call (07) 3713 3200 | [steel-lineautomation.com.au](http://steel-lineautomation.com.au)

MD04-03DS-16RD11-V3 (0316) Copyright © Steel-Line Automation. All rights reserved.

 **STEEL-LINE**  
AUTOMATION